

Paint & Varnish Processing

FIBC Dischargers SBB

15



Description ▼

The SBB FIBC Discharger consists of a stainless steel frame complete with a material discharge hopper and an upper mobile cross bar for lifting of the filled up bag by forklift truck into the Discharger.

Function ▼

The SBB is a modular system for discharging Flexible Intermediate Bulk Containers (Big Bags) in different configurations depending on the application. Easy introduction of the FIBC into the support frame and dust-free discharging along with a variety of options make the SBB extremely user-friendly.

The four loops of the FIBC are attached to the hooks of the detached cross bar that has previously been laid on top of the FIBC. The cross bar with the attached FIBC is then picked up by a forklift truck and introduced into the frame of the SBB Discharger. Once the FIBC has settled on the rubber seal of the discharge hopper the outlet closing rope of the FIBC can be pulled open through the inspection hatch of the discharge hopper.



Application ▼

SBB FIBC Dischargers are used to transfer the raw materials contained in FIBCs to silos for storage. The material is normally conveyed pneumatically into the silo.

Benefits ▼

- ✓ **Modular design;**
- ✓ **Compact shipping dimensions;**
- ✓ **Easy to install;**
- ✓ **Complete dust-free discharging from bag corners even with compressed powders.**

Paint & Varnish Processing

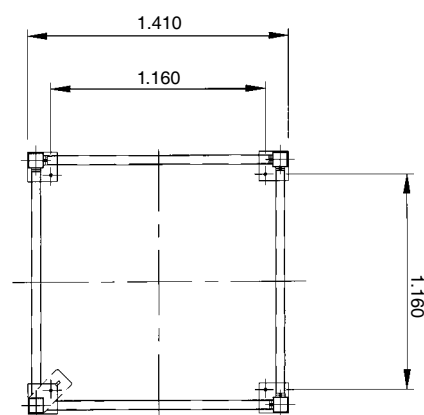
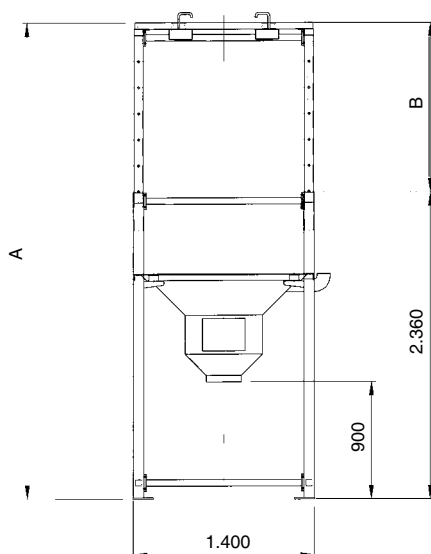
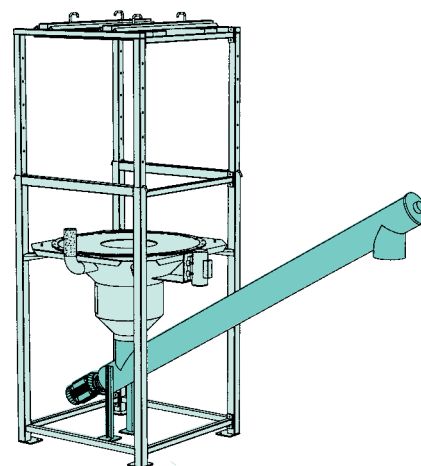
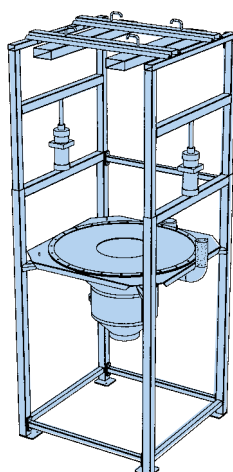
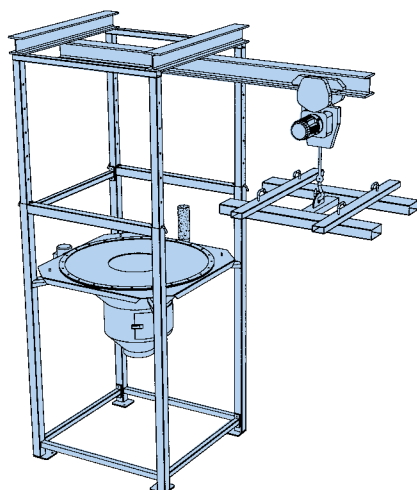
FIBC Dischargers SBB



Technical Features / Performance ▼

- ▶ Construction material: stainless steel
- ▶ Vibrating outlet cone fitted with outlet opening hatchway

Overall Dimensions ▼



TYPE	A	B	C	Max. Bulk Bag Dimensions		
				L	W	M (max.)
SBB 1.1.125 C, S, M (tramoggia e telaio in mild steel)	3,668	1,884	1,308	1,000	1,000	1,800
SBB 2.1.125 C, S, M (tramoggia in aisi e telaio in mild steel)	4,108	2,234	1,658	1,000	1,000	2,200

Dimensions in mm